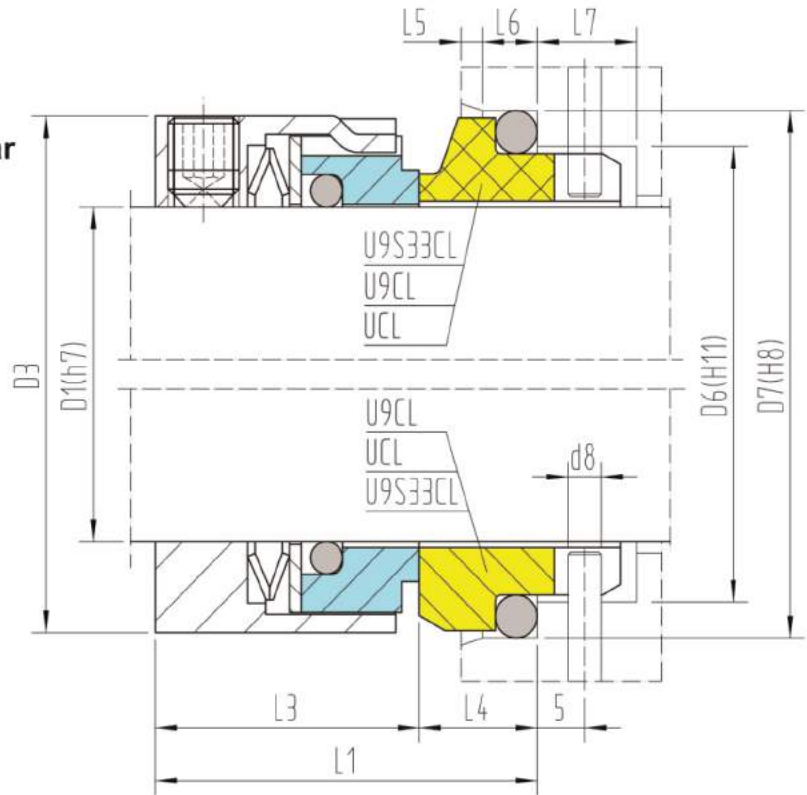


Shorter norm seal
 Massive replaceable seal rings
 Super-sinus-spring
 Shorter fitting length
 Optional mit Fördergewinde lieferbar



Materials:

Rotary: E, F, G, Q, U

Stationary: A, B, Q, U

Rubber parts: P, E, V, K, M

Operating limits:

(look at working conditions page 112)

$p \leq$	16 bar
$t =$	$-35 \div 200^\circ\text{C}$
$v \leq$	15 m/s

EN 12756 (DIN24960)

D1	D6	D7	D3	L1	L3	L4	L6	L5	D8	L7	Typ
14	21	25	25	28	21	7	4	1.5	3	8.5	UCL
16	23	27	27	28	21	7	4	1.5	3	8.5	UCL
18	27	33	33	30.5	20.5	10	5	2	3	9	UCL
20	29	35	35	30.5	20.5	10	5	2	3	9	UCL
22	31	37	37	30.5	20.5	10	5	2	3	9	UCL
24	33	39	39	32.5	22.5	10	5	2	3	9	UCL
25	34	40	40	33.5	22	11.5	5	2	3	9	U9CL
28	37	43	43	33.5	22	11.5	5	2	3	9	U9CL
30	39	45	45	34.5	23	11.5	5	2	3	9	U9CL
32	42	48	47	34.5	23	11.5	5	2	3	9	U9CL
33	42	48	48	34.5	23	11.5	5	2	3	9	U9CL
35	44	50	50	34.5	23	11.5	5	2	3	9	U9CL
38	49	56	55	38	24	14	6	2	4	9	U9CL
40	51	58	57	39	25	14	6	2	4	9	U9CL
43	54	61	60	39	28	11	6	2	4	9	U9S33CL
45	56	63	62	39	28	11	6	2	4	9	U9S33CL
48	59	66	65	39	25	14	6	2	4	9	U9CL
50	62	70	67	40	30	12	6	2.5	4	9	U9S33CL
53	65	73	70	40	26	14	6	2.5	4	9	UCL
55	67	75	72	40	25	15	6	2.5	4	9	U9CL
58	70	78	79	42	31	11	6	2.5	4	9	U9S33CL
60	72	80	81	42	31	11	6	2.5	4	9	U9S33CL
63	75	83	84	45	30	15	6	2.5	4	9	U9CL
65	77	85	86	45	32	13	6	2.5	4	9	U9S33CL
70	83	92	91	47	34	13	7	2.5	4	9	U9S33CL
75	88	97	99	47	31	16	7	2.5	4	9	UCL
80	95	105	104	48	32	16	7	3	4	9	U9S33CL
85	100	110	109	48	32	16	7	3	4	9	U9S33CL
90	105	115	114	54	35.8	18.2	7	3	4	9	U9CL
95	110	120	119	54	36.8	17.2	7	3	4	9	U9CL
100	115	125	124	54	36.8	17.2	7	3	4	9	U9CL