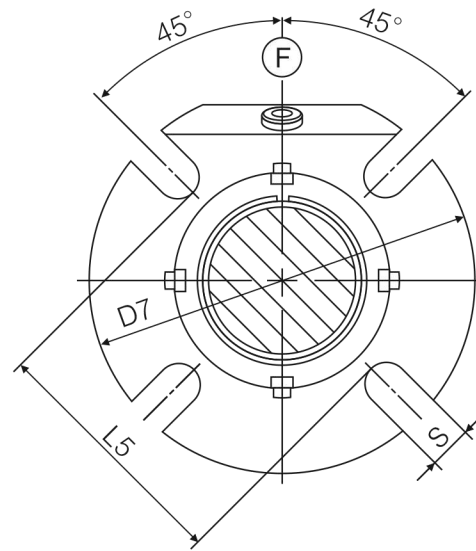
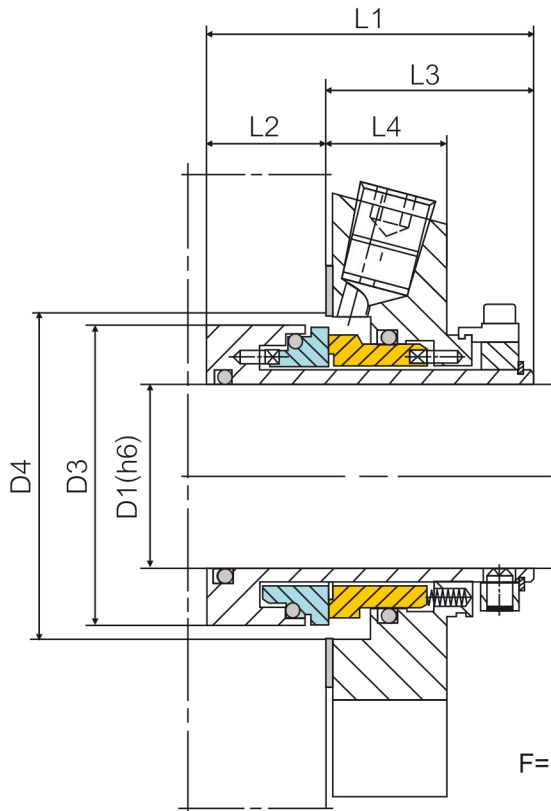
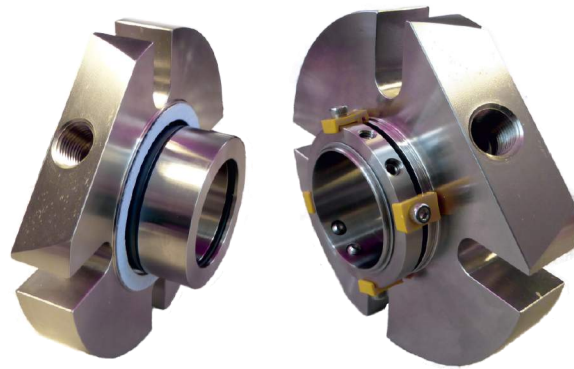


Single cartridge seal
Balanced
Massive replaceable seal rings
Independent of rotation
Stationary springs
Flushing inlet standard



F=Flushing inlet

Materials:

Rotary: Q, U

Stationary: A, B, Q, U

Rubber parts: P, E, V, K, M

Operating limits:

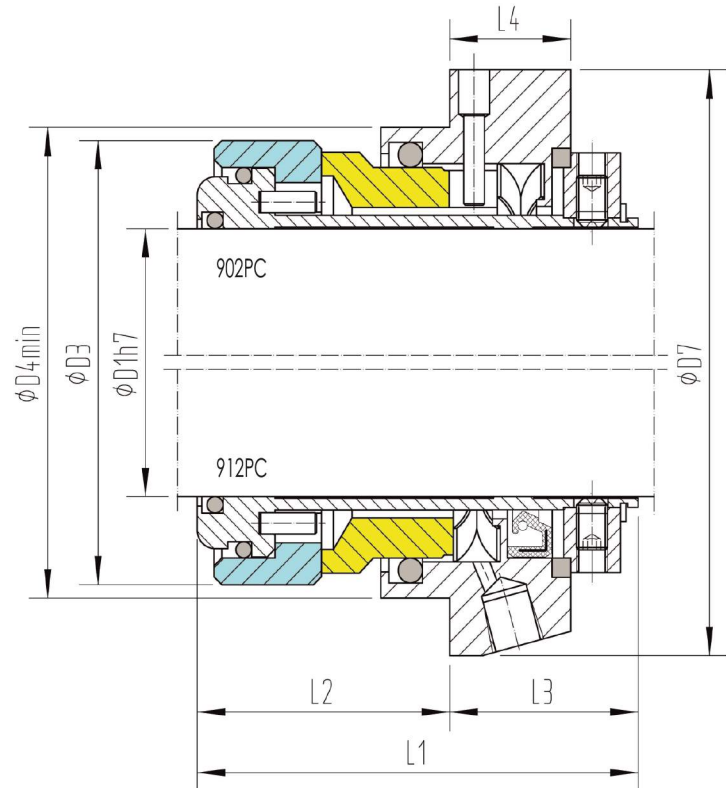
(look at working conditions page 112)

p ≤	25 bar
t =	-35 ÷ 220°C
v ≤	10 m/s

D1	D3	D4 min	D4 max	L1	L2	L3	L4	L5	D7	S
25	43	44	51.5	67	24.6	42.4	25.4	62	105	13.2
28	46	47	52	67	24.6	42.4	25.4	62	105	13.2
30	48	49	56	67	24.6	42.4	25.4	65	110	13.2
32	49.8	51	57	67	24.6	42.4	25.4	67	110	13.2
33	49.8	51	57	67	24.6	42.4	25.4	67	113	13.2
35	53	54	61.5	67	24.6	42.4	25.4	70	123	13.2
38	56	57	66	67	24.6	42.4	25.4	75	123	14.2
40	58	59	68	67	24.6	42.4	25.4	75	133	14.2
42	60.5	61.5	69.5	67	24.6	42.4	25.4	80	133	14.2
43	60.5	61.5	70.5	67	24.6	42.4	25.4	80	138	14.2
45	62.5	64	73	67	24.6	42.4	25.4	81	138	14.2
48	65.6	57	75	67	24.6	42.4	25.4	84	148	14.2
50	68	59	78	67	24.6	42.4	25.4	87	148	18
53	72	73	87	67	24.6	42.4	25.4	97	148	18
55	73	74	83	67	24.6	42.4	25.4	90	148	18
60	78	79	91	67	24.6	42.4	25.4	102	157	18
65	84.8	85.7	98.5	67	24.6	42.4	25.4	109	163	18
70	93	95	108	67	24.6	42.4	25.4	118	178	18
75	100	101.6	118	84	26.6	57.4	28	129	190	18
80	106.4	108	124	84	26.6	57.4	28	135	195	18
85	109.5	111.1	128	84	26.6	57.4	28	139	198	22
90	115.9	117.5	135	84	26.6	57.4	28	145	205	22
95	119.1	120.7	138	84	26.6	57.4	28	148	208	22
100	125.4	127	144	84	26.6	57.4	28	154	218	22

902PC-912PC

Single working solid-cartridge seal
 Balanced
 Super-sinus-spring, stationary
 Massive replaceable seal rings
 Independent of rotation



Materials:

Rotary: Q, U
 Stationary: Q, U
 Rubber parts: P, E, V, K, M

Operating limits:

(look at working conditions page 112)

$p \leq$	25 bar
$t =$	$-35 \div 220^\circ\text{C}$
$v \leq$	10 m/s

D1	D3	D4 min	L1	L2	L3	L4	D7
35	62	64	63	39	24	14	80
60	88	106	91	57	34	22	129
80	113	140	102	36	66	52	185