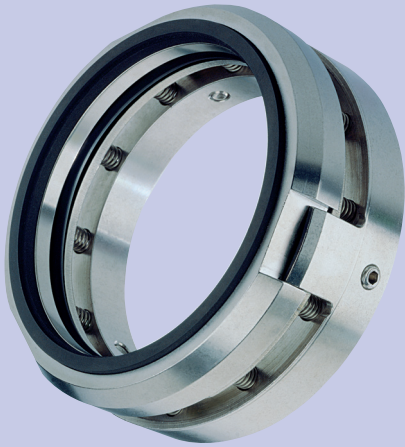


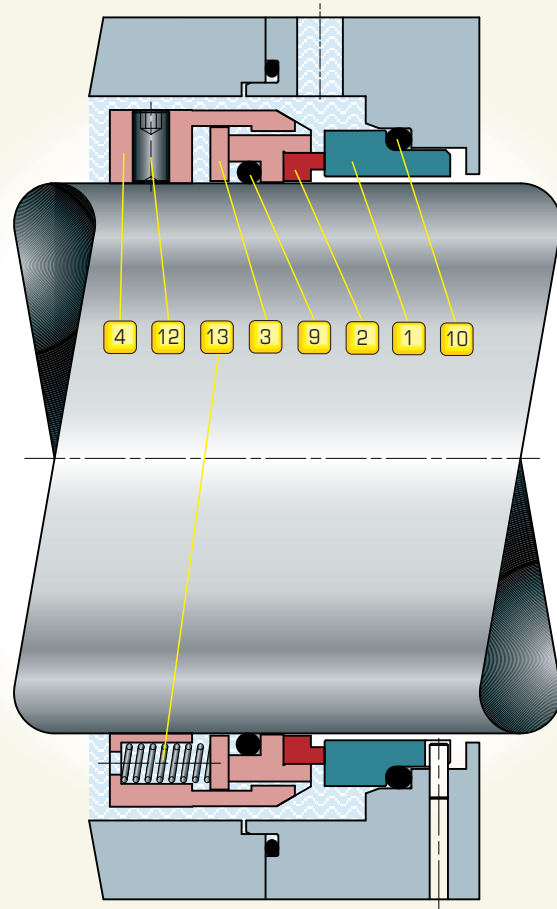
MECHANICAL SEAL
N3X



CAT012 ENG REV 12.09

N3X is our solution for large diameter equipment on low and medium pressures; it is widely used on large machinery, process pumps, liquid conveying pumps and agitators. The *N3X* is a single component seal with type X pinned stationary seat, multi-spring, and can rotate in either direction. Equipped with three drive lugs on the rotating body it can tolerate strong vibration and mechanical stresses. The "O" ring is easily removed and refitted when assembling the seal on shafts with keyways, threads or sharp edges.

**MECHANICAL SEAL
N3X**



ELEMENTS:

- 1 STATIONARY SEAT
- 2 ROTARY FACE
- 3 THRUST RING
- 4 SEAL BODY
- 9 ROTARY FACE "O" RING
- 10 STATIONARY SEAT "O" RING
- 12 SETSCREW
- 13 SPRING

OPERATING CONDITIONS:

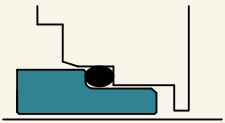
| DIAMETER: (mm) | SPEED: (m/sec) | PRESSURE: (bar) | TEMPERATURE: (°C) |
|-------------------|-------------------|--------------------|----------------------|
| 200 ↑ 105 | 20 ↑ 0 | 12 ↑ 0 | +250 ↑ -100 |

CHARACTERISTICS:

-  SINGLE
-  BI-DIRECTIONAL
-  FLUIGAM
(energized dynamic "O" ring)
-  RESISTANT TO ACIDS & BASES
-  RESISTANT TO MECHANICAL STRESS

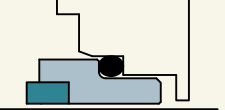
STATIONARY SEAT: 1

SOLID TYPE X



Cr-Mo Steel: **Y1**
Silicon Carbide: **U31**

TYPE X WITH INSERT



AISI 316+Tungsten Carbide: **K22**

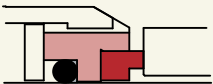
STATIONARY SEAT "O" RING: 10

- Nitrile Rubber: **G**
- Ethylene Propylene: **D**
- Fluoroelastomer: **V**
- Perfluoroelastomer: **G711**

● PTFE: **T**

ROTARY FACE: 2

WITH INSERT



AISI 316+Graphite Resins impreg.: **Z32**
AISI 316+Silicon Carbide: **U32**
AISI 316+Tungsten Carbide: **K22**

ROTARY FACE "O" RING: 9

- Nitrile Rubber: **G**
- Ethylene Propylene: **D**
- Fluoroelastomer: **V**
- Perfluoroelastomer: **G711**

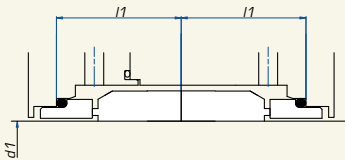
○ PTFE with AISI 316 spring: **T3**

SPRINGS: 13

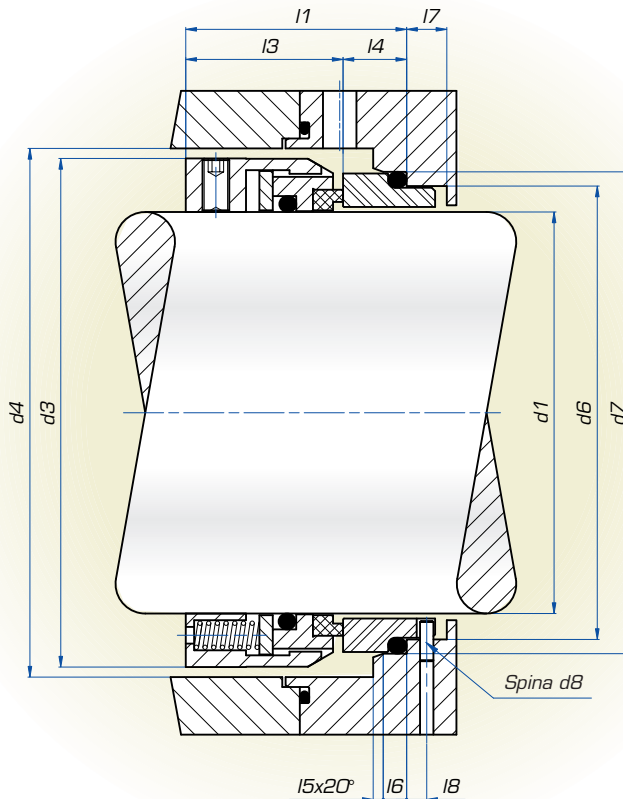
AISI 316: **E**

OTHER METAL PARTS: 4 12 3

AISI 316: **E**



Back-to-Back solution. For stationary ring type **W** dimensions see catalogue N3XøN3X



| Seal Diameter | d1 | d3 | d4 | d6 | d7 | d8 | l1 | l3 | l4 | l5 | l6 | l7 | l8 |
|---------------|-----|-----|------|-------|-----|-------|-------|----|----|----|----|----|----|
| | h6 | | min. | H11 | H8 | ± 0,5 | ± 0,5 | | | | | | |
| 105 | 105 | 137 | 143 | 120,5 | 129 | 4 | 61 | 42 | 19 | 3 | 7 | 12 | 6 |
| 110 | 110 | 142 | 148 | 125,5 | 134 | 4 | 66 | 47 | 19 | 3 | 7 | 12 | 6 |
| 115 | 115 | 147 | 153 | 130,5 | 139 | 4 | 66 | 47 | 19 | 3 | 7 | 12 | 6 |
| 120 | 120 | 152 | 158 | 135,5 | 144 | 4 | 66 | 47 | 19 | 3 | 7 | 12 | 6 |
| 125 | 125 | 157 | 163 | 140,5 | 149 | 4 | 66 | 47 | 19 | 3 | 7 | 12 | 6 |
| 130 | 130 | 162 | 168 | 145,5 | 154 | 4 | 66 | 47 | 19 | 3 | 7 | 12 | 6 |
| 140 | 140 | 172 | 178 | 154,5 | 166 | 4 | 69 | 47 | 22 | 3 | 9 | 12 | 6 |
| 150 | 150 | 190 | 196 | 171,5 | 183 | 5 | 73 | 47 | 26 | 3 | 9 | 13 | 7 |
| 160 | 160 | 200 | 206 | 181,5 | 193 | 5 | 78 | 52 | 26 | 3 | 9 | 13 | 7 |
| 170 | 170 | 210 | 216 | 191,5 | 203 | 5 | 78 | 52 | 26 | 3 | 9 | 13 | 7 |
| 180 | 180 | 220 | 226 | 201,5 | 213 | 5 | 78 | 52 | 26 | 3 | 9 | 13 | 7 |
| 190 | 190 | 230 | 236 | 211,5 | 223 | 5 | 78 | 52 | 26 | 3 | 9 | 13 | 7 |
| 200 | 200 | 240 | 246 | 221,5 | 233 | 5 | 78 | 52 | 26 | 3 | 9 | 13 | 7 |

Dimensions subject to modifications without notice.

Example:

To order the seals shown on this page for shaft 120 mm and material shown in the table below:

| | | | | | |
|-----|----|---|----|----|--------|
| 2 | 1 | 9 | 10 | 13 | 4 12 3 |
| Z32 | Y1 | V | V | E | E |

The code will be: N3X120 - Z32Y1VEE ⁽³⁾

NOTES:

- 1) The material shown on this page is only part of the available range, for other products stock items, please call our Technical Sales Office.
- 2) The material should be chosen according to the operating conditions. All queries should be sent to our Technical Sales Office.
- 3) When the material of the seal on the stationary seat "O" ring is the same as the seal on the rotary face "O" ring the product code is not repeated.