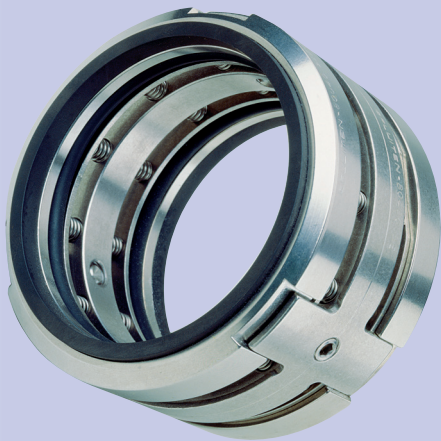


MECHANICAL SEAL UM3AØUM3A



CAT014 ENG REV 12.09

A double monobloc version is available to reduce axial bulk, suitable for dangerous, toxic, inflammable, highly abrasive, gaseous liquids and situations in which it is necessary to avoid atmospheric emissions.

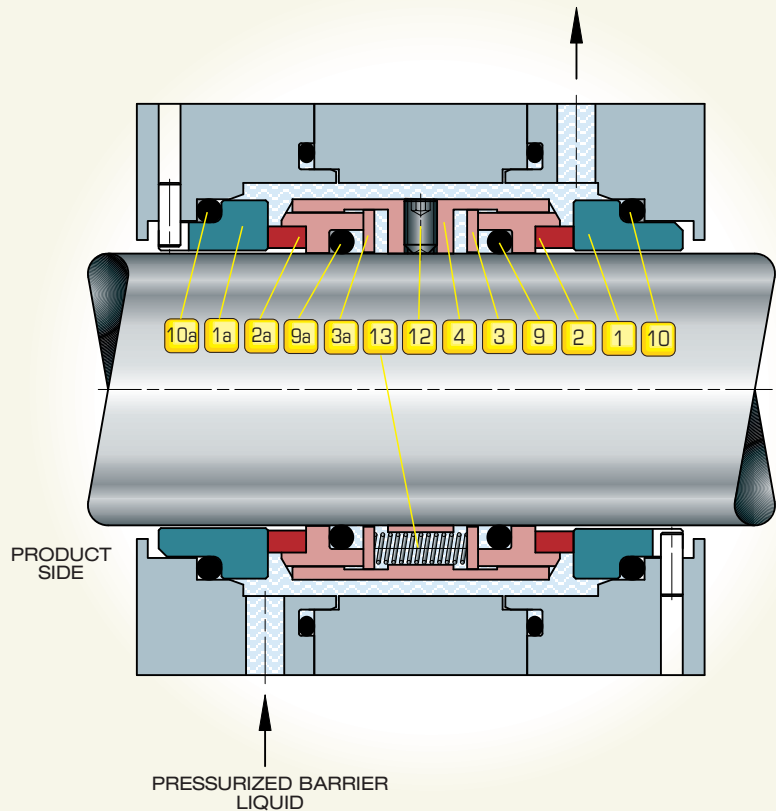
Particularly suitable for dryers and top-entry agitators.

Available cartridge execution with and without bearing included. The UM3AØUM3A is a double component seal with a type A pinned stationary seat, multi-spring and suitable for rotation in either direction.

Equipped with three drive lugs on the rotating body it can tolerate strong vibration and mechanical stresses.

The "O" ring is easily removed and refitted when assembling the seal on shafts with keyways, threads or sharp edges.

MECHANICAL SEAL UM3AØUM3A



ELEMENTS:

- | | |
|------------------------------------|-------------------------------------|
| 1 STATIONARY SEAT | 1a STATIONARY SEAT |
| 2 ROTARY FACE | 2a ROTARY FACE |
| 3 THRUST RING | 3a THRUST RING |
| 4 SEAL BODY | 9a ROTARY FACE "O" RING |
| 9 ROTARY FACE "O" RING | 10a STATIONARY SEAT "O" RING |
| 10 STATIONARY SEAT "O" RING | |
| 12 SETSCREW | |
| 13 SPRING | |

OPERATING CONDITIONS:

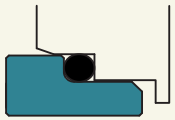
DIAMETER: (mm)	SPEED: (m/sec)	PRESSURE: (bar)	TEMPERATURE: (°C)
100	20	12	+250
↑	↑	↑	↑
20	0	0	-100

CHARACTERISTICS:

- | | | |
|---|---------------------------------------|---------------------------------------|
| DOUBLE | BI-DIRECTIONAL | RESISTANT TO ACIDS & BASES |
| FLUIGAM (energized dynamic "O" ring) | RESISTANT TO MECHANICAL STRESS | DIRTY & TOXIC LIQUIDS |

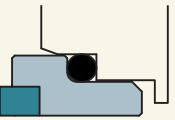
STATIONARY SEAT: 1 1a

SOLID TYPE A



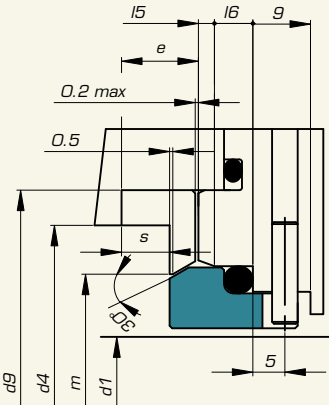
Cr-Mo Steel: **Y1**
Silicon Carbide: **U31**

TYPE A WITH INSERT



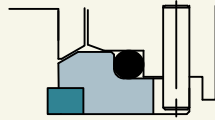
AISI 316+Tungsten Carbide: **K22**

SOLID TYPE R⁽³⁾



Cr-Mo Steel: **Y1**
Silicon Carbide: **U31**

TYPE R WITH INSERT



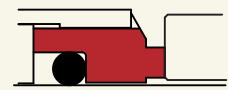
AISI 316+Tungsten Carbide: **K22**

STATIONARY SEAT "O" RING: 10 10a

- Nitrile Rubber: **G**
- Ethylene Propylene: **D**
- Fluoroelastomer: **V**
- Perfluoroelastomer: **G711**
- PTFE: **T**

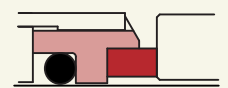
ROTARY FACE: 2 2a

SOLID



Graphite Resins impregnated: **Z31**
Graphite Antimony impregnated: **Z11**
Silicon Carbide: **U31**

WITH INSERT



AISI 316+Graphite Resins impreg.: **Z32**
AISI 316+Silicon Carbide: **U32**
AISI 316+Tungsten Carbide: **K22**

ROTARY FACE "O" RING: 9 9a

- Nitrile Rubber: **G**
- Ethylene Propylene: **D**
- Fluoroelastomer: **V**
- Perfluoroelastomer: **G711**
- PTFE with AISI 316 spring: **T3**

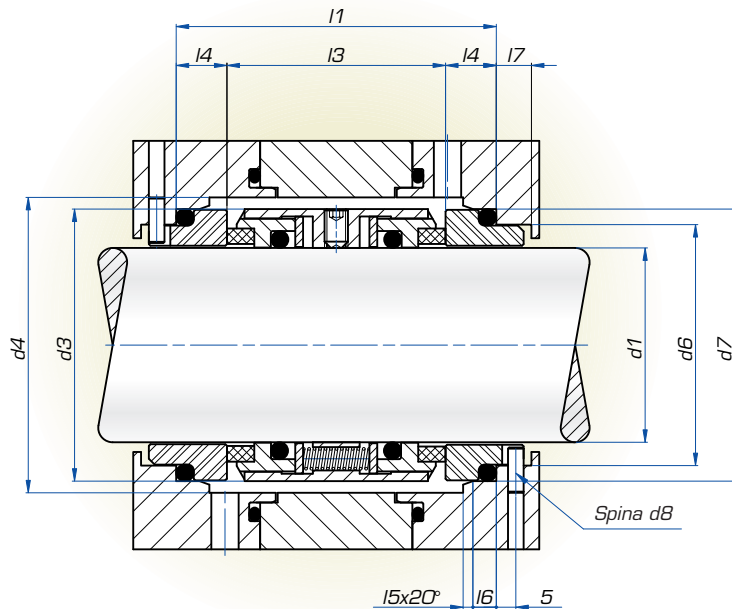


SPRINGS: 13

AISI 316: **E**
Hastelloy C: **I**

OTHER METAL PARTS: 4 12 3 3a

AISI 316: **E**



Seal Diam.	d1 h6	d3	d4 min.	d6 H11	d7 H8	d8 ± 0,5	l1 ± 0,5	l3 ± 0,5	l4	l5	l6	l7	d9 H8	m	s	e
20	20	34	36	29	35	3	60	40	10	2	5	9	40	32,5	1	4
22	22	36	38	31	37	3	60	40	10	2	5	9	42	34,5	1	4
24	24	38	40	33	39	3	63	43	10	2	5	9	43	36,5	1	4
25	25	39	41	34	40	3	63	43	10	2	5	9	46	37,5	1	4
28	28	42	44	37	43	3	64	44	10	2	5	9	48	40,5	1	4
30	30	44	46	39	45	3	64	44	10	2	5	9	50	42,5	1	4
32	32	46	48	42	48	3	64	44	10	2	5	9	53	45,5	1	4
33	33	47	49	42	48	3	64	44	10	2	5	9	53	45,5	1	4
35	35	49	51	44	50	3	64	44	10	2	5	9	60	47,5	1	4
38	38	54	58	49	56	4	69	47	11	2	6	9	62	53,5	3	6
40	40	56	60	51	58	4	69	47	11	2	6	9	65	55,5	3	6
43	43	59	63	54	61	4	69	47	11	2	6	9	67	58,5	3	6
45	45	61	65	56	63	4	69	47	11	2	6	9	70	60,5	3	6
48	48	64	68	59	66	4	69	47	11	2	6	9	72	63,5	3	6
50	50	66	70	62	70	4	74	48	13	2,5	6	9	75	67,5	1,5	6
53	53	69	73	65	73	4	74	48	13	2,5	6	9	77	70,5	1,5	6
55	55	71	75	67	75	4	74	48	13	2,5	6	9	86	72,5	1,5	6
58	58	78	83	70	78	4	82	56	13	2,5	6	9	88	75,5	1,5	6
60	60	80	85	72	80	4	82	56	13	2,5	6	9	91	77,5	1,5	6
63	63	83	88	75	83	4	82	56	13	2,5	6	9	93	80,5	1,5	6
65	65	85	90	77	85	4	82	56	13	2,5	6	9	96	82,5	1,5	6
68	68	88	93	81	90	4	86	56	15	2,5	7	9	98	87,5	0,5	6
70	70	90	95	83	92	4	88	58	15	2,5	7	9	103	89,5	0,5	6
75	75	99	104	88	97	4	91	61	15	2,5	7	9	108	94,5	0,5	6
80	80	104	109	95	105	4	92	61	15,5	3	7	9	120	102,5	0,5	6
85	85	109	114	100	110	4	92	61	15,5	3	7	9	125	107,5	0,5	6
90	90	114	119	105	115	4	94	63	15,5	3	7	9	130	112,5	0,5	6
95	95	119	124	110	120	4	94	63	15,5	3	7	9	135	117,5	0,5	6
100	100	124	129	115	125	4	94	63	15,5	3	7	9	140	122,5	0,5	6

Dimensions subject to modifications without notice.

Example:

To order the seals shown on this page for shaft 30 mm and material shown in the table below:

2a	2	1a	1	9a	9	10a	10	13	4	12	3	3a
Z32		U31		T3		T		E				E
	Z32		Y1		V		V					

The code will be: UM3A030UM3A - Z32U31T3TEE/Z32Y1VEE ⁽⁴⁾

NOTES:

- 1) The material shown on this page is only part of the available range, for other products stock items, please call our Technical Sales Office.
- 2) The material should be chosen according to the operating conditions. All queries should be sent to our Technical Sales Office.
- 3) The last letter of the product code UM3A0UM3A shows the type A stationary seat with a slot for an antirotation pin: or if a stationary seat with chamfer for use of an axial lock ring fitted, please request type R. The product code will then be UM3R0UM3R.
- 4) When the material of the seal on the stationary seat "O" ring is the same as the seal on the rotary face "O" ring the product code is not repeated.