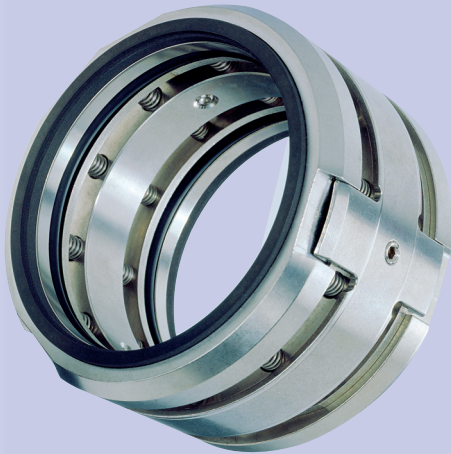


MECHANICAL SEAL N3XØN3X



CAT016 ENG REV 12.09

A double monobloc version is available to reduce axial bulk, suitable for dangerous, toxic, inflammable, highly abrasive, gaseous liquids and situations in which it is necessary to avoid atmospheric emissions.

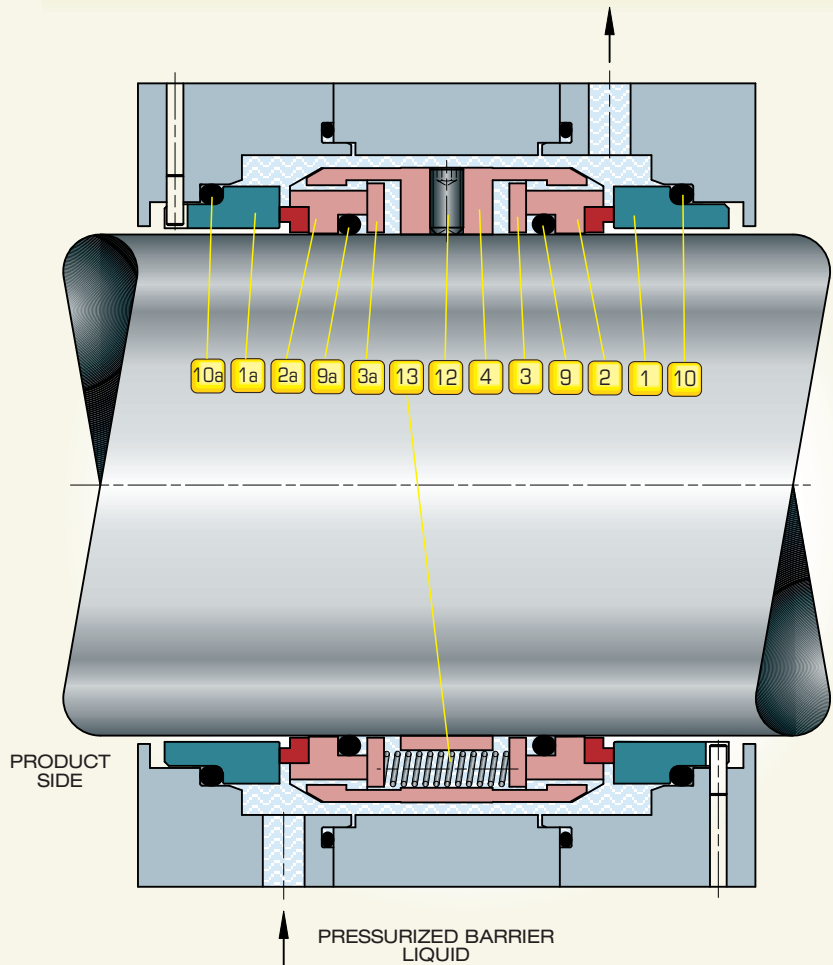
Particularly suitable for dryers, top-entry agitators and large diameter equipment.

Available cartridge execution with and without bearing included. The N3XØN3X is a double component seal with a type A pinned stationary seat, multi-spring and suitable for rotation in either direction.

Equipped with three drive lugs on the rotating body it can tolerate strong vibration and mechanical stresses.

The "O" ring is easily removed and refitted when assembling the seal on shafts with keyways, threads or sharp edges.

MECHANICAL SEAL N3XØN3X



ELEMENTS:

- | | |
|------------------------------------|-------------------------------------|
| 1 STATIONARY SEAT | 1a STATIONARY SEAT |
| 2 ROTARY FACE | 2a ROTARY FACE |
| 3 THRUST RING | 3a THRUST RING |
| 4 SEAL BODY | 9a ROTARY FACE "O" RING |
| 9 ROTARY FACE "O" RING | 10a STATIONARY SEAT "O" RING |
| 10 STATIONARY SEAT "O" RING | |
| 12 SETSCREW | |
| 13 SPRING | |

OPERATING CONDITIONS:

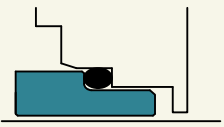
DIAMETER: (mm)	SPEED: (m/sec)	PRESSURE: (bar)	TEMPERATURE: (°C)
200	20	12	+250
↑	↑	↑	↑
105	0	0	-100

CHARACTERISTICS:

- | | | |
|--------------------------------------|--------------------------------|----------------------------|
| DOUBLE | BI-DIRECTIONAL | RESISTANT TO ACIDS & BASES |
| FLUIGAM (energized dynamic "O" ring) | RESISTANT TO MECHANICAL STRESS | DIRTY & TOXIC LIQUIDS |

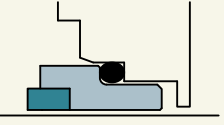
STATIONARY SEAT: 1 1a

SOLID TYPE X



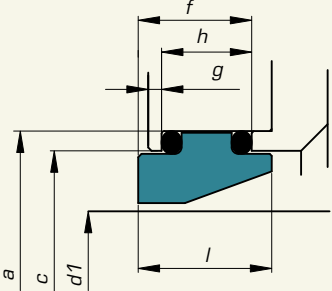
Cr-Mo Steel: **Y1**
Silicon Carbide: **U31**

TYPE X WITH INSERT



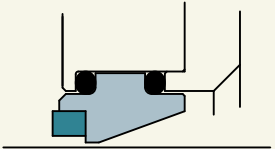
AISI 316+Tungsten Carbide: **K22**

SOLID TYPE W⁽³⁾



Cr-Mo Steel: **Y1**
Silicon Carbide: **U31**

TYPE W WITH INSERT



AISI 316+Tungsten Carbide: **K22**

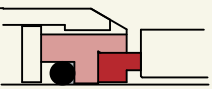
STATIONARY SEAT "O" RING: 10 10a

- Nitrile Rubber: **G**
- Ethylene Propylene: **D**
- Fluoroelastomer: **V**
- Perfluoroelastomer: **6711**

- PTFE: **T**

ROTARY FACE: 2 2a

WITH INSERT



AISI 316+Graphite Resins impreg.: **Z32**
AISI 316+Silicon Carbide: **U32**
AISI 316+Tungsten Carbide: **K22**

ROTARY FACE "O" RING: 9 9a

- Nitrile Rubber: **G**
- Ethylene Propylene: **D**
- Fluoroelastomer: **V**
- Perfluoroelastomer: **6711**

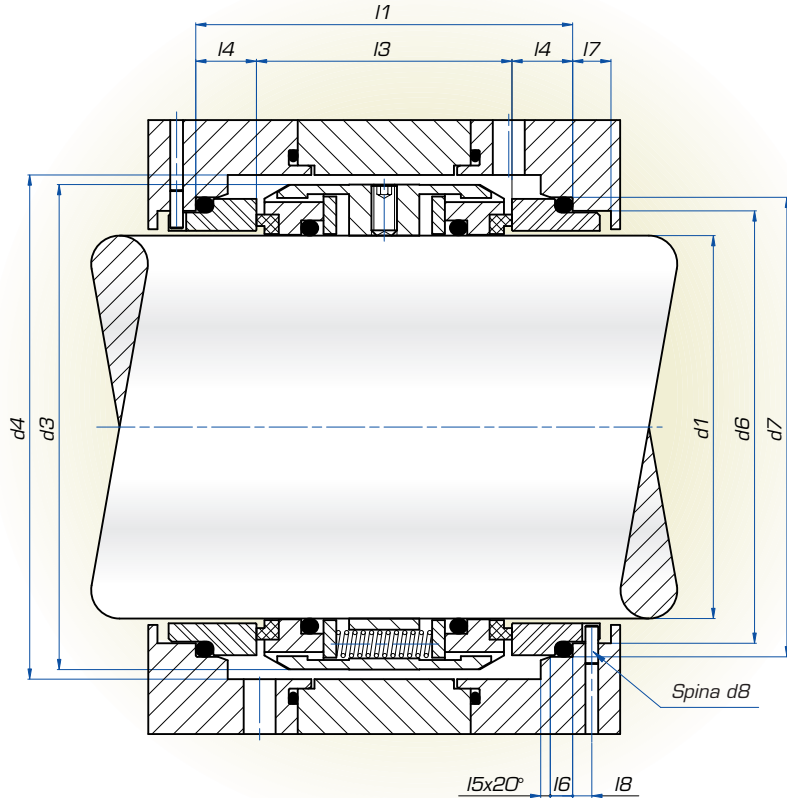
- PTFE with AISI 316 spring: **T3**

SPRINGS: 13

AISI 316: **E**

OTHER METAL PARTS: 4 12 3 3a

AISI 316: **E**



Seal Diam.	d1	d3	d4	d6	d7	d8	l1	l3	l4	l5	l6	l7	l8	a	c	f	g	h	l
	<i>h6</i>		<i>min.</i>	<i>H11</i>	<i>H8</i>	$\pm 0,5$	$\pm 0,5$							<i>H7</i>	<i>H11</i>				<i>-0,1</i>
105	105	137	143	120,5	129	4	118	80	19	3	7	12	6	138	128	21,5	3,5	17	26
110	110	142	148	125,5	134	4	118	80	19	3	7	12	6	143	133	23,5	2,5	19	28
115	115	147	153	130,5	139	4	118	80	19	3	7	12	6	148	138	23,5	2,5	19	28
120	120	152	158	135,5	144	4	118	80	19	3	7	12	6	153	143	23,5	2,5	19	28
125	125	157	163	140,5	149	4	118	80	19	3	7	12	6	158	148	23,5	2,5	19	28
130	130	162	168	145,5	154	4	118	80	19	3	7	12	6	163	153	23,5	2,5	19	28
140	140	172	178	154,5	166	4	124	80	22	3	9	12	6	175	165	23,5	2,5	19	28
150	150	190	196	171,5	183	5	137	85	26	3	9	13	7	195	182	31	3,5	24,5	36
160	160	200	206	181,5	193	5	146	94	26	3	9	13	7	205	192	31	3,5	24,5	36
170	170	210	216	191,5	203	5	146	94	26	3	9	13	7	215	202	31	3,5	24,5	36
180	180	220	226	211,5	213	5	146	94	26	3	9	13	7	225	212	31	3,5	24,5	36
190	190	230	236	201,5	223	5	146	94	26	3	9	13	7	235	222	31	3,5	24,5	36
200	200	240	246	221,5	233	5	146	94	26	3	9	13	7	245	232	31	3,5	24,5	36

Dimensions subject to modifications without notice.

Example:

To order the seals shown on this page for shaft 150 mm and material shown in the table below:

	2a	2	1a	1	9a	9	10a	10	13	4	12	3	3a
Product side	Z32		U31		D		D		E				E
Atmospheric side		Z32		U31		D		D					

The code will be: N3X150N3X - Z32U31DEE/Z32U31DEE ⁽⁴⁾

NOTES:

- 1) The material shown on this page is only part of the available range, for other products stock items, please call our Technical Sales Office.
- 2) The material should be chosen according to the operating conditions. All queries should be sent to our Technical Sales Office.
- 3) The last letter of the product code N3XØN3X shows the type X stationary seat with a slot for an antirotation pin: or if a clamped stationary seat, please request type W. The product code will then be N3WØN3X.
- 4) When the material of the seal on the stationary seat "O" ring is the same as the seal on the rotary face "O" ring the product code is not repeated.