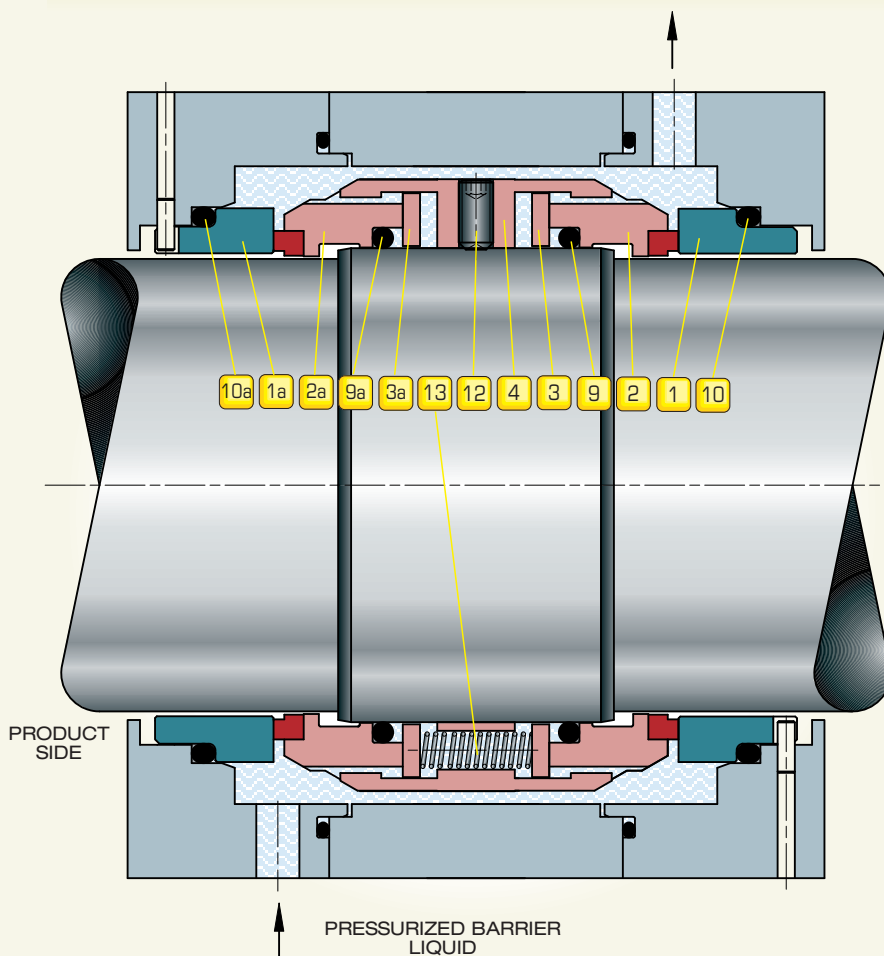
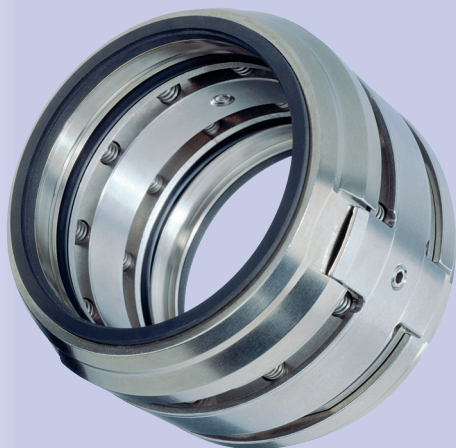


MECHANICAL SEAL  
**BL3XØBL3X**



**ELEMENTS:**

- |                                    |                                     |
|------------------------------------|-------------------------------------|
| <b>1</b> STATIONARY SEAT           | <b>1a</b> STATIONARY SEAT           |
| <b>2</b> ROTARY FACE               | <b>2a</b> ROTARY FACE               |
| <b>3</b> THRUST RING               | <b>3a</b> THRUST RING               |
| <b>4</b> SEAL BODY                 | <b>9a</b> ROTARY FACE "O" RING      |
| <b>9</b> ROTARY FACE "O" RING      | <b>10a</b> STATIONARY SEAT "O" RING |
| <b>10</b> STATIONARY SEAT "O" RING |                                     |
| <b>12</b> SETSCREW                 |                                     |
| <b>13</b> SPRING                   |                                     |

**OPERATING CONDITIONS:**

DIAMETER: (mm)	SPEED: (m/sec)	PRESSURE: (bar)	TEMPERATURE: (°C)
<b>200</b>	<b>20</b>	<b>75</b>	<b>+250</b>
↑	↑	↑	↑
<b>105</b>	<b>0</b>	<b>0</b>	<b>-100</b>

**CHARACTERISTICS:**

- |                            |                                |                                      |
|----------------------------|--------------------------------|--------------------------------------|
| DOUBLE                     | BI-DIRECTIONAL                 | BALANCED                             |
| RESISTANT TO ACIDS & BASES | RESISTANT TO MECHANICAL STRESS | FLUIGAM (energized dynamic "O" ring) |
| DIRTY & TOXIC LIQUIDS      |                                |                                      |

CAT017 ENG REV 12.09

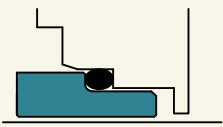
**A** double monobloc version is available to reduce axial bulk, suitable for dangerous, toxic, inflammable, highly abrasive, gaseous liquids and situations in which it is necessary to avoid atmospheric emissions.

Particularly suitable for dryers, hydrogenators, top-entry agitators and large diameter equipment. Available cartridge execution with and without bearing included. The **BL3XØBL3X** is a double component seal with a type A pinned stationary seat, pressure balanced, multi-spring and suitable for rotation in either direction. Equipped with three drive lugs on the rotating body it can tolerate strong vibration and mechanical stresses.

The "O" ring is easily removed and refitted when assembling the seal on shafts with keyways, threads or sharp edges.

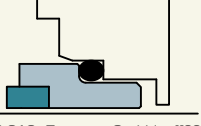
**STATIONARY SEAT:** 1 1a

SOLID TYPE X



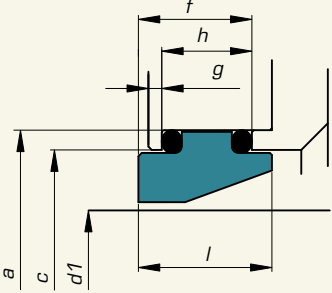
Cr-Mo Steel: **Y1**  
Silicon Carbide: **U31**

TYPE X WITH INSERT



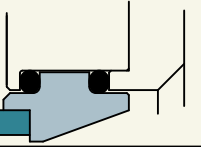
AISI 316+Tungsten Carbide: **K22**

SOLID TYPE W<sup>(3)</sup>



Cr-Mo Steel: **Y1**  
Silicon Carbide: **U31**

TYPE W WITH INSERT



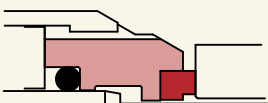
AISI 316+Tungsten Carbide: **K22**

**STATIONARY SEAT "O" RING:** 10 10a

- Nitrile Rubber: **G**
- Ethylene Propylene: **D**
- Fluoroelastomer: **V**
- Perfluoroelastomer: **G711**
- PTFE: **T**

**ROTARY FACE:** 2 2a

WITH INSERT



AISI 316+Graphite Resins impreg.: **Z32**  
AISI 316+Silicon Carbide: **U32**  
AISI 316+Tungsten Carbide: **K22**

**ROTARY FACE "O" RING:** 9 9a

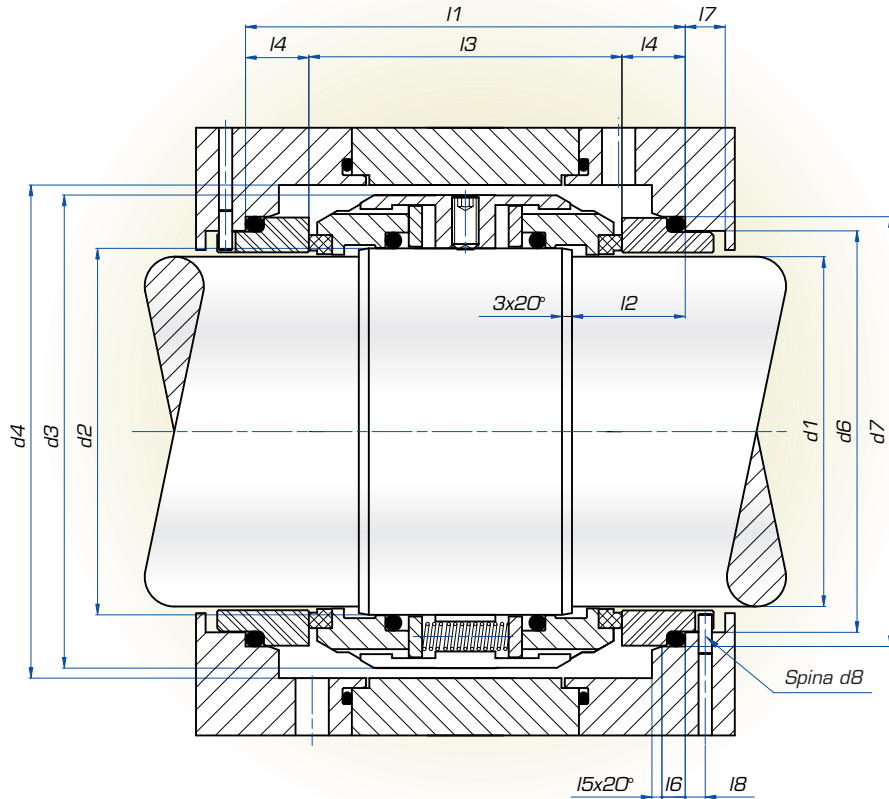
- Nitrile Rubber: **G**
- Ethylene Propylene: **D**
- Fluoroelastomer: **V**
- Perfluoroelastomer: **G711**
- PTFE with AISI 316 spring: **T3**

**SPRINGS:** 13

AISI 316: **E**

**OTHER METAL PARTS:** 4 12 3 3a

AISI 316: **E**



Seal Diam.	d1	d2	d3	d4	d6	d7	d8	l1	l2	l3	l4	l5	l6	l7	l8	a	c	f	g	h	l
				min.	H11	H8		± 0,5	± 0,5	± 0,5						H7	H11				-0,1
110	105	110	142	148	120,5	129	4	136	34	98	19	3	7	12	6	138	128	21,5	3,5	17	26
115	110	115	147	153	125,5	134	4	136	34	98	19	3	7	12	6	143	133	23,5	2,5	19	28
120	115	120	152	158	130,5	139	4	140	36	102	19	3	7	12	6	148	138	23,5	2,5	19	28
125	120	125	157	163	135,5	144	4	140	36	102	19	3	7	12	6	153	143	23,5	2,5	19	28
130	125	130	162	168	140,5	149	4	140	36	102	19	3	7	12	6	158	148	23,5	2,5	19	28
140	135	140	172	178	149,5	161	4	146	39	102	22	3	7	12	6	170	160	23,5	2,5	19	28
150	145	150	190	196	159,5	171	4	147	39,5	103	22	3	9	12	6	180	170	23,5	2,5	19	28
160	150	160	200	206	171,5	183	5	174	48	122	26	3	9	13	7	195	182	31	3,5	24,5	36
170	160	170	210	216	181,5	193	5	174	48	122	26	3	9	13	7	205	192	31	3,5	24,5	36
180	170	180	220	226	191,5	203	5	174	48	122	26	3	9	13	7	215	202	31	3,5	24,5	36
190	180	190	230	236	201,5	213	5	174	48	122	26	3	9	13	7	225	212	31	3,5	24,5	36
200	190	200	240	246	211,5	223	5	174	48	122	26	3	9	13	7	235	222	31	3,5	24,5	36
210	200	210	256	262	221,5	233	5	178	50	126	26	3	9	13	7	245	232	31	3,5	24,5	36

Dimensions subject to modifications without notice.

**Example:**

To order the seals shown on this page for shaft 180 mm and material shown in the table below:

	2a	2	1a	1	9a	9	10a	10	13	4	12	3	3a
Product side	Z32		K22		V		V		E			E	
Atmospheric side		Z32		K22		V		V					

The code will be: BL3X180BL3X - Z32K22VEE/Z32K22VEE <sup>(4)</sup>

**NOTES:**

- 1) The material shown on this page is only part of the available range, for other products stock items, please call our Technical Sales Office.
- 2) The material should be chosen according to the operating conditions. All queries should be sent to our Technical Sales Office.
- 3) The last letter of the product code BL3XØBL3X shows the type X stationary seat with a slot for an antirotation pin: or if a clamped stationary seat, please request type W. The product code will then be BL3WØBL3X.
- 4) When the material of the seal on the stationary seat "O" ring is the same as the seal on the rotary face "O" ring the product code is not repeated.